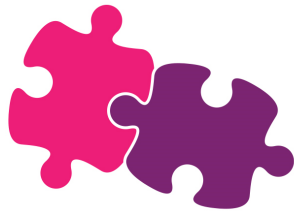


Lincoln Carlton Academy



Lincoln Carlton
· ACADEMY ·

Lincoln Carlton Academy

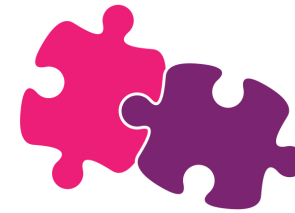
Carlton Boulevard

Lincoln

LN2 4AG

01522 522633

enquiries@lincolncarltonacademy.lincs.sch.uk



Lincoln Carlton
· ACADEMY ·

Year 2

Parent Handbook



Banksy.



Klee.

Introduction

As most of our pupils move up through the school we have tried to make this guide more specific to what your child will experience differently in the coming year.

Although the timings of the day remain the same, there are slight changes to how their time in school is spent as the children move towards the end of Key Stage 1.

We hope this booklet is useful to you and if you can think of anything we can include in the future, please let us know.

R Malam

Mrs R Malam
Head Teacher

Moving Up

As your child enters their final term in Year 2, a letter will be sent out to you telling you which class they will be moving up into and who will be the teacher for that class.

During Term 6 a day will be allocated as a 'Moving Up Day'. On this day your child will spend the day in their new classroom with their new teacher.

The classes in Year 3 are:



Term Dates 2017/18

| Term | Day | Date |
|------|---|---|
| 1 | Tuesday To Friday | 5th September 2017 20th October 2017 |
| 2 | Monday To Tuesday <i>School closed Friday 8th December for staff INSET day.</i> <i>Bank Holidays Monday 25th & Tuesday 26th December 2017 and Monday 1st January 2018</i> | 30th October 2017 19th December 2017 |
| 3 | Wednesday To Friday | 3rd January 2018 9th February 2018 |
| 4 | Monday To Wednesday <i>Bank Holidays Friday 30th March and Monday 2nd April 2018</i> | 19th February 2018 28th March 2018 |
| 5 | Monday To Friday <i>Bank Holidays Monday 7th May and Monday 28th May 2018</i> | 16th April 2018 25th May 2018 |
| 6 | Monday To Friday | 4th June 2018 20th July 2018 |

Life in Year 2

In Year 2, children have the opportunity to build on the skills and experiences they have learned in Year 1. They are expected to work independently and to use their initiative and problem solving skills to a deeper degree. They will be asked to take responsibility for their own learning and become reflective about the work they do and how they could improve next time. There will be a balance of active, practical learning with more focused written work. Outside classrooms are incorporated into the planning whenever relevant to the learning and give children the opportunity to participate in supported practical activities in a larger space.

A typical day may look like this:

| | |
|-------------|---|
| 8.50-9.10 | Morning job (e.g. writing challenge etc.) |
| 9.15—9:45 | Phonics |
| 9.45-10.05 | Guided reading |
| 10:05—10:55 | English |
| 10:55-11:10 | Playtime |
| 11.10-12.10 | Maths |
| 12.10-1.00 | Lunch & Play |
| 1.00-1.25 | Registration & Grammar or spelling |
| 1.25-2.40 | Topic/PE/Computing/RE etc... |
| 2.50-3.20 | Assembly |

SATS

During Year 2, teacher assessment is carried out in the core subjects of English, Mathematics and Science. In English, teachers are required to record scores in the three strands of Reading, Writing, and Speaking & Listening. To assist teachers in arriving at an assessed grade, tests and tasks are completed in reading, writing and mathematics.

More information about SATS in our school will be given out through the course of the year.

READING

By Year 2, children have discovered the joy of reading for themselves and many are now progressing onto longer books. We want to continue to encourage children to read daily but once children have reached their Terrific 200 they will not be included in the newsletter as they will have begun to read chapter books which take longer to read.

Uniform

Uniform can be purchased at the following suppliers:

www.lca.impacttrading.co.uk

www.tesco.com/ues

www.uniform-direct.com/acatalogue/Lincoln-Carlton-Academy.html

Uniform Direct, Pelham centre, Lincoln or High Street, Lincoln

As in previous years, your children will need items from the uniform section of the website. Please could you also ensure that your child has a pair of tracksuit bottoms in their PE kit for autumn/winter months.

We ask that PE Kits are brought into school every day. They can be stored on their pegs.

Children do not need to wear PE kit to school on any day. Please ensure the PE kit follows our school uniform policy (white or purple T-shirt, navy or black bottoms, plimsolls or trainers).

Please ensure all items are named. If you wish to support CAFS while buying name stickers, please enter the code 35505 at www.name-labels.com.

Before and After School Care

If you would like your child to attend kids club before or after school, please contact Greetwell Hollow directly on 01522 548456.

After School Clubs

We will continue to offer after school activities on a half-termly basis. In order to secure a place in one of the groups, please respond as soon as possible to the letter sent out, following the directions given to book.

As in Year 1, an option of learning a musical instrument is offered and details are sent out via letter.

School Trips

Throughout the year we have planned various fun and engaging trips to tie in with the term's topic. With all trips, without sufficient contributions from parents we may not be able to subsidise a year group attending a trip. If you are having any problems with making payments, please speak to the school office as soon as possible.

Special and Class Assemblies

Our Special Assembly takes place once a half term on a Friday afternoon at 2:50pm. You will receive dates through the newsletter and your class teacher will let you know if your child has been selected for an award.

In the Summer term, each class from Year 1 upwards will lead an assembly. This is usually a celebration of the term's topic and the parents of the children in that class are invited.

SHARE

SHARE happens regularly on a Friday morning at 9am. All dates will be in the diary section of the newsletter.

Parent's Evenings

Parent's Evenings are held twice a year in the autumn and spring terms and there is an informal parent drop in at the end of the summer term. At Parent's Evening we welcome the whole family to join us for drinks and cake. We provide a crèche for the little ones too. You will be informed when Parent's Evenings are coming up and will have the opportunity to book in to see the class teachers to discuss your child's progress.

CAFS

All parents are welcome at CAFS meetings and events; help is always welcome, as are new ideas for improving the quality and range of the group's activities. Please come along to a meeting, you will be most welcome.

You can keep up to date with CAFS news via the CAFS section on the newsletter and on Facebook; Lincoln Carlton Academy Friends & Staff - CAFS

Food in School

All Key Stage 1 children are offered a free meal each day which is made onsite by our own kitchen team. We will automatically provide a standard hot dinner unless you tell us otherwise through the online ordering system or by telling the office.

Please ensure that your child continues to bring a named water bottle to school filled with fresh water every day.

Fruit is offered every day and milk can be purchased termly at a small cost through www.coolmilk.com.

Golden Treats

As in the rest of the school, each day every child starts on the sun and as they go through the day and make their individual choices, they can move upwards onto the silver and even the gold star for following our 6 Golden Rules.

If the choices they make are not so good, they may be moved down to the white cloud or the black cloud. These can change through the course of the day and at home time, if they are on the gold star they get a gold star sticker on their own chart in the classroom.

When a child reaches 6 gold star stickers, they bring a 'golden ticket' to the school office which they can exchange for a Golden Treat.

The Golden Treats they can choose from currently are Afternoon Tea with the Head Teacher, Hot Chocolate with cream and marshmallows, Ice Cream with toppings or Face/ Nail painting, Cartoon & Popcorn and this is done once a term.

Golden Time

Golden time is a special time set aside on a Friday afternoon where the children choose an activity they would like to do from around the school. If a child has been on the black cloud due to breaking one or more of the Golden rules during

The Golden Rules and Values

We expect a high standard of behaviour at all times and encourage this by praising and rewarding positive behaviour through a variety of means, including the Friday “Special Assembly” to which parents are invited in rotation.

Golden Rule

Corresponding Value

We are **Honest**

Integrity

We are **Responsible & Respectful**

Gratitude

We are **Helpful**

Support

We **Try Our Best**

Resilience

We **Listen**

Understanding

We are **Kind & Caring**

Oneness

We also have the **Carlton 4 C's**

- **Calm, Co-operative and Caring Community**
- **Courteous Corridors**
- **Considerate Classrooms**
- **Clean Cloakrooms**

Keeping in Touch

We use variety of ways to communicate with you about what is happening in school and special events.

Please check out our website for school details:

www.lincolncarltonacademy.com

The newsletter goes out each week on a Thursday by email so please look out for it. All letters regarding school trips, events or after school clubs will be sent out by email with the Thursday newsletter. Please continue to check book bags each night in case some information is sent this way.

We will also be introducing ParentHub—a free app to all Android and IOS users. More information to follow.

Our facebook page is:

www.facebook.com/lincolncarltonacademy.

As we continue to aim to be a paperless school, please notify the office as soon as possible if you change your email address. You can send changes to:

enquiries@lincolncarltonacademy.lincs.sch.uk

Creative Curriculum Themes

| | |
|--------|-----------------------|
| Term 1 | Street Detectives |
| Term 2 | Food, Glorious Food |
| Term 3 | Muck, Mess & Mixtures |
| Term 4 | The Scented Garden |
| Term 5 | Beach Combers |
| Term 6 | Wriggle and Crawl |

Family Support

Ruth Stephenson, our Family Support worker, is available to help with advice, information or support on a 1:1 basis by appointment.

As part of our family support we also offer courses and parent support groups such as our Special Education Needs (SEN) parents support sessions and drop in sessions.

Any courses that are running are advertised in the weekly newsletters. There are limited spaces available on the courses and we can often offer a crèche.

To book your place on any of the courses or to make an appointment please contact Ruth on 01522 527339.

Attendance

Attendance at school is essential for learning and as such we expect excellent attendance and this is defined as 96% or above. If your child is ill or not well enough to come to school, parents/carers are asked to inform us by telephone before the start of the school day. A coding system is used in the registers and any unexplained absence is noted and followed up. Every month, the family support worker and our Head teacher monitor the attendance of every child in school. If a child's attendance falls below 95% an initial letter is sent to let you know.

If the child's attendance does not improve, the parents/carers will be invited into school to discuss the matter. As each successive period of monitoring causes concern, the intervention becomes more severe and can result in being issued fixed penalty notices and finally legal prosecution. The Early Years of a child's attendance is a critical time to establish good school attendance.

Please also ensure your children arrive at school on time as the first 10 minutes in school is a valuable time for your child to settle into the school day. If your child arrives after the register is taken at 9.10am they will be marked as late and letters may be sent out for persistent lateness.